

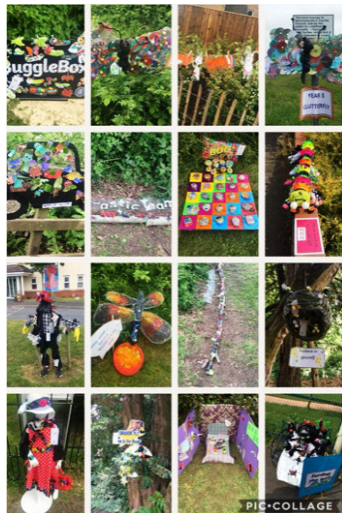
# Beech Green Primary School

## *"Believe Grow Persevere Succeed"*

### Newsletter for Wednesday 13<sup>th</sup> June 2018

Dear Parents and Carers,

What an incredible end to last week: 420 children and some willing adults running around the field to raise money for cancer was a delightful and heart-warming sight. Thank you all so much for contributing to the astounding total and for making the event so positive.



Our generous community came out in force on Saturday for the Big Bug Hunt. You all helped to raise about £600 just from map sales. All this money will be spent on the children in our school. Thank you to everyone who organised the event, baked a cake, made a bug or bought a map.

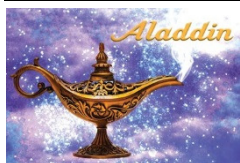
The first transition session for children is this afternoon. Please let us know if there is anything else we need to know about your child, or if you have any concerns.

Julie Poulson



@beech\_green

### **Our Panto Box Office Is Open! Please buy your tickets**



Tickets have been on sale for a while now for the pantomime Aladdin booked for Christmas 2018! Our deadline of the end of June for Rec-Y5 is fast approaching, so please do log on to ParentPay and buy your ticket/s this week. A deposit will do, but we do need all parents to please respond to this request.

### **Beech Green's Race For Life – Thank you – amount raised so far...**

£1500.50 online, plus £307.38 Gift Aid, plus £430.47 handed in to school = £2,238.35 for Cancer Research UK. Thank you so much for your generosity and supporting this event. If you still have sponsor money coming in, you can still pay in to:-

<https://fundraise.cancerresearchuk.org/page/beech-green-primary-school>

### **World War 1 Centenary Tournament – Sunday 1<sup>st</sup> July 2018 – Fishers Meadow**

12.30 to 3.00 p.m. followed by Drum Head Service

(12 noon – parade from Quedgeley Community Centre)

“To commemorate the Centenary of the end of World War 1 in 1918 and to give thanks to those who gave their lives or were injured, that we might be here today to remember them.”

**School Lottery** – Supporters must be 16 years of age or older

- **Flyers coming home today**
- Support your school community and help raise valuable funds for our school
- Weekly online lottery, with a draw every Saturday evening
- Tickets cost £1 a week
- 40% of ticket sales go to our school
- Guaranteed cash prize to one of our supporters every week
- Match all 6 numbers and win £25,000!
- Joining is easy, just visit the webpage [www.yourschoollottery.co.uk](http://www.yourschoollottery.co.uk) and search for Beech Green.
- You can make a big difference to our school as Beech Green financially benefits the more members we have.

## **Sporting Achievement**

Well done to Zane Hunt who has been selected to compete in the South West Amateur Gymnastics Association Regional Team Finals. This is a prestigious event in the world of gymnastics and we wish Zane good luck as he prepares to take part.

If other children are doing well in their chosen sport/dance/music and have been selected to take part in a big event, then please do let us know and we can share their success with you in this newsletter.

## **Does your child have additional needs? We want your views. Consultation from**

### **Monday 4th June to Tuesday 31st July**

### **Have your say!**

**Additional needs: helping children and young people learn and succeed**

*Meeting the high needs challenge in Gloucestershire*



The Local Authority are planning some changes to the way we allocate funding through the High Needs budget to improve the support we provide to children and young people with additional needs and their families. We want to make sure that your child has the support they need so they can achieve their ambitions and to help us do this, we need to know your views.

We would appreciate your comments on our proposals and any other ideas that you may have on how we can make the most of our high needs budget.

You can have your say by completing the consultation online at [www.gloucestershire.gov.uk/high-needs-consultation](http://www.gloucestershire.gov.uk/high-needs-consultation)

You can complete it online or request a paper copy of the consultation by contacting [highneedsprogramme@gloucestershire.gov.uk](mailto:highneedsprogramme@gloucestershire.gov.uk)

We also want feedback from children and young people with additional needs. If your child has additional needs please inform them of the consultation.

We have developed an easy read version of the consultation which can be completed at [www.gloucestershire.gov.uk/cypandeasyread](http://www.gloucestershire.gov.uk/cypandeasyread).

To request a paper copy of the consultation, contact us at [highneedsprogramme@gloucestershire.gov.uk](mailto:highneedsprogramme@gloucestershire.gov.uk) or they can collect a copy at their local library or in reception at Shire Hall, Westgate Street, Gloucester, Gloucestershire, GL1 2TG.

Completed paper copies of the consultation can be handed to the reception desk at Shire Hall or one of the libraries. Alternatively, they can post completed copies to Vicki Hazard, High Needs Programme Team, Shire Hall, Westgate Street, Gloucester, GL1 2TG.

You can find more information about the High Needs Programme at [www.gloucestershire.gov.uk/high-needs-programme](http://www.gloucestershire.gov.uk/high-needs-programme)

## **Science Festival – Tuesday 19<sup>th</sup> February**

Good luck to the children who will be representing Beech Green at the Science Festival next Tuesday that will be held at Denmark Road High School. There will be many other local primary schools attending. The day will comprise of time for the children to run the Beech Green stall and teach other children our investigation, and the opportunity to try out other schools' science investigations.

## **Are You Moving During The Summer Holiday?**

We are currently working on our admissions for September and have waiting lists in most year groups. If you are moving in the school holiday, and so not coming back in September, would you please confirm with the school office a.s.a.p. so that we can offer that place to someone on our waiting list. Many thanks.

<b><i>Did you get your post this week?</i></b>	
<b>Reception and KS1</b>	<b>KS2</b>
	ParentMail: current Y3, Y4 and Y5 Swimming for next year
ParentMail: School Uniform for September	ParentMail: School Uniform for September
	ParentMail: The Malverns Trip Reminder
Individual Class and Teacher for next year letter	Individual Class and Teacher for next year letter

Contact school - [admin@beechgreen.gloucs.sch.uk](mailto:admin@beechgreen.gloucs.sch.uk)

Website – [www.beechgreenprimary.co.uk](http://www.beechgreenprimary.co.uk)